

THE 'PAYS DE MONTBÉLIARD' TOURIST OFFICE HERE TO HELP YOU!

6 GOOD REASONS TO WORK WITH OUR INCOMING SERVICE

- A personalized, professional and friendly welcome, responsive and attentive.
- Products that can be customized to suit your needs.
- A single point of contact.
- Advice and suggestions.
- A team of experienced tour guides for tours in your own language.
- Expert knowledge of the area.

YOUR CONTACT



Laurène Marseu

Tel. +33 (0)3 81 94 14 64

reservations@paysdemontbeliard-tourisme.com

Monday to Friday (excluding public holidays)
9am to 12pm and 2pm to 5pm

*Programming of custom built or personalized stays,
guided tours led by certified tour guides, organization
of thematic days, seminars, advice, support and
coordination...*

***Our incoming service takes care of you,
takes care of everything!***

4 EASY STEPS TO BOOK YOUR STAY

- 1 Choose your package or service from our catalogue or choose a personalized program.
- 2 Contact us by e-mail or phone and you will receive a quotation and a contract.
- 3 Confirm your booking by sending back your signed contract and a 30% deposit.
- 4 You will receive your vouchers by e-mail.

Visiting the Pays de Montbéliard

The Pays de Montbéliard is located in the Bourgogne-Franche-Comté region between Switzerland and the Jura Mountains.

Distances by road from Montbéliard

Paris 430 km • Lyon 320 km • Nancy 200 km •
Strasbourg 180 km • Genève 220 km • Stuttgart 300 km
By highway A36 > exit n°8 'Montbéliard centre'.
A5 highway > 'Langres' exit, then N19 via Vesoul.

Belfort-Montbéliard TGV station

- TGV Paris/Montbéliard : 2h15
- Zurich/Montbéliard : 1h45
- Dijon/Montbéliard : 50 min
- Lyon/Montbéliard : 2h25
- Marseille/Montbéliard : 4h15

Shuttles to and from Montbéliard TGV and Montbéliard SNCF central station.
TER station in Montbéliard town center.

Basel/Mulhouse airport

80 km and 50 min
by A36 highway.



OUR GUIDED TOURS

Come and discover the region's in heritage on a guided tour with Pays de Montbéliard's certified tour guides.



THE MONTBÉLIARD WURTEMBERG CASTLE

🕒 1h30 📍 Montbéliard

After more than a year of renovation, the Montbéliard Wurtemberg Castle partially reopened its doors in December 2024.

Henriette de Montbéliard, Frédéric I, Sophie Dorothée de Wurtemberg and other historical figures guide you on a new historical tour, revisiting the key periods of Montbéliard County. A one of a kind insight on the castle's architecture and the museum's collections.



CITY OF PRINCES' HISTORICAL HEART

🕒 1h30 📍 Montbéliard

Discover the fascinating history of the city of princes! Nestled at the foot of its castle, travel through four centuries of a unique destiny under the reign of the Wurtemberg family. You can also explore the historic heart by bike (groups of 10 maximum).

THE ANCIENT THEATRE

🕒 1h30 📍 Mandeure

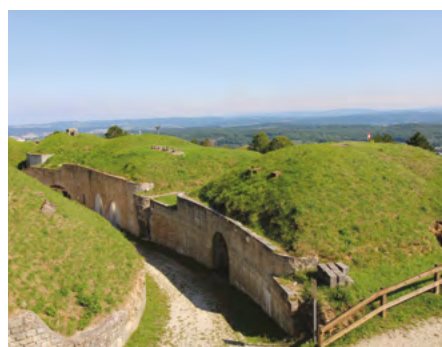
Explore one of the largest theaters in Gaul (146 m in diameter) and let it reveal the prestigious past of the old town of Epomanduodurum. The guided tour reveals 4 tiers of seating and 20 centuries of history.



THE 'MONT-BART' FORT

🕒 1h30 📍 Bavans

Built between 1873 and 1877, the fort preserves some impressive architectural features: a roofed inner 'street', an armored casemate, powder magazines, etc.



THE 'IMMACULÉE CONCEPTION' CHURCH

🕒 1h 📍 Audincourt

In the heart of the Forges district is located one of the first churches built in reinforced concrete in France (1932) by monk and architect Dom Bellot.



THE 'SACRÉ-CŒUR' CHURCH

🕒 1h15 📍 Audincourt

A major place of modern sacred art, the church, built from 1949 to 1951, is home to a crown of 17 stained-glass windows by Fernand Léger and works by Bazaine and Le Moal. Discover the incredible story of this collective work.

THE BONAL STADIUM

🕒 1h45 📍 Montbéliard

The 20,000-seat stadium built in the year 2000 opens up its backstage areas: stands, dressing rooms, press room... and tell you all about history of Peugeot and the local and historic team FCSM.

PRICES*

OF GUIDED TOURS

Number of people	Monday to Saturday	Sunday and public holidays
5 to 20 people	fixed price €140	fixed price €180
21 to 30 people	fixed price €170	fixed price €210
+ For more than 30 people, a 2nd guide is required	either 2 x €140 or 2 x €170	either 2 x €180 or 2 x €210
Additional group admission to the Montbéliard Wurtemberg Castle: €9 / person (minimum 10 visitors)		
Booking fee: €15 (group)		

*on a 1:30 hour tour basis

USEFUL INFORMATION

- The Montbéliard Wurtemberg Castle is closed on Mondays and Tuesdays.
- For the Castle guided tour: 13 people per guide.
- Tours are available in English and German.
- Our suggested tours are combinable and are not exhaustive. Please do not hesitate to contact us for more information or customized programs.
- The prices featured in this brochure are 2025 updated, and are subject to change in the following years.



REOPENING SOON

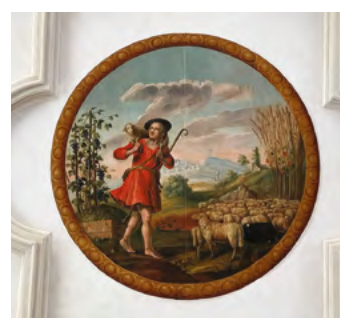


THE 'SAINT-MARTIN' PROTESTANT CHURCH

📍 Montbéliard

The restoration work on the inside, which began in 2021, has given the church a fresh look and reveal its original decorations! Built between 1601 to 1607 by Heinrich Schickhardt, it is the oldest building in France dedicated to Reformation worship.

In a few months' time, it will reopen its doors to visitors, offering tours and discovery tools.



franco-
german

NEW

GROUP ONE-DAY PACKAGE MONTBÉLIARD, CITY OF PRINCES

As a German principality for four centuries, the 'Pays de Montbéliard' draws its identity from its Protestant culture and distinctive history.

Morning:

Self-guided visit of the **new historical tour of Montbéliard Wurtemberg Castle.**

Immerse yourself in the history of the Wurtemberg dynasty, **and discover some of their most important personalities** through a contemporary and immersive museography.

Lunchtime:

Traditional lunch in a restaurant in Montbéliard to enjoy local dishes.

Afternoon:

Guided tour of the historical heart of Montbéliard to discover the city of princes.

Nestled at the foot of its castle, travel **through four centuries** of a unique destiny under the reign of the Wurtemberg family.

€56

FROM

/ PER PERSON*

BASED ON 20 PAYING GUESTS

*Price 2025

Price includes: guided tour of the historical center, admission to the Montbéliard Wurtemberg Castle, lunch (1/4 wine, water and coffee included).

Price does not include: booking fee (€15), supplement for visits on Sundays and public holidays, extras during meals, personal spendings, travel, parking and insurance.



Book your experience:



+33 (0)3 81 94 14 64



reservations@paysdemontbeliard-tourisme.com

yesterday and tomorrow

GROUP ONE-DAY PACKAGE AUTO RETRO

Enjoy an unusual day exploring the 'Pays de Montbéliard', home of the famous brand Peugeot.

Morning:

Self-guided tour of the 'Musée de l'Aventure Peugeot' in Sochaux, where you'll discover over 200 years of extraordinary industrial history.

The museum presents a vast collection of Peugeot objects from the first saw blades to contemporary car models.

Lunchtime:

Regional lunch at the museum, in one of the private lounges.

Afternoon:

Discover the Montbéliard region **on a vintage car**, and hear about its history by the passionate drivers of the 'Vieux Volants Franc-Comtois' association.

During your pleasant retro drive, you'll pass through the historical center **of the City of Princes** overlooked by **the Montbéliard Wurtemberg Castle**, go up **the Mont-Bart fort** opening up the horizon to the peaks of the Vosges and Jura mountains, and follow along the bucolic 'Canal du Rhône au Rhin'...

Complete this experience with **a sweet snack or aperitif with local products**.

€79

FROM

/ PER PERSON*

BASED ON 20 PAYING GUESTS

For groups of more than 20 people, the number of guests will be split in two and the program order will be reversed. Please note: maximum 3 persons per vintage car. Program valid for 40 people maximum.

*Price 2025

Price includes: admission to the museum, lunch (1 bottle of wine for 5 persons, water and coffee included), vintage car ride and a sweet snack or aperitif.

Price does not include: booking fee (€15), extras during meals, personal spendings, travel, parking and insurance.



Book your experience:



+33 (0)3 81 94 14 64



reservations@paysdemontbeliard-tourisme.com

rebellious and spiritual

GROUP ONE-DAY PACKAGE AUDINCOURT'S HERITAGE GEMS

Discover the modern treasures of the 'Pays de Montbéliard' during a visit to the city of Audincourt, a town full of artistic nuggets.

Morning:

Guided tour of the **Audincourt's Art Center** 'Donation Patt'.

Located in the castle of the 'Parc de la Filature', this collection of Art is made up of paintings, sculptures and objects of all kinds. Some of the great names include Dali, Combas, Di Rosa, Erro and local Jean Messagier.

Lunchtime:

Traditional lunch in a restaurant in Audincourt to discover local products.

Afternoon:

Led by a professional tour guide, explore two of Audincourt's religious heritage sites: **the 'Immaculée Conception' Church and the 'Sacré-Coeur' Church.**

The 'Immaculée Conception' Church, located in the Forges district, is one of the first churches built in reinforced concrete in France (1932). It was the work of monk and architect Dom Bellot.

€ **62** / PER PERSON*

FROM

BASED ON 20 PAYING GUESTS

Program valid for 30 people maximum.

*Price 2025

Price includes: admission to Audincourt's Art Center, lunch (1/4 wine, water and coffee included) and the three guided tours.

Price does not include: booking fee (€15), extras during meals, personal spendings, travel, parking and insurance.



The 'Sacré-Coeur' Church, a mecca of modern sacred art will reveal the works of Maurice Novarina, Fernand Léger, Jean Bazaine and Jean Le Moal... the incredible history of this collective building is yours to discover.



Book your experience:



+33 (0)3 81 94 14 64



reservations@paysdemontbeliard-tourisme.com

peasants and workers

GROUP ONE-DAY PACKAGE TRADITIONS AND KNOW-HOW IN 'PAYS DE MONTBÉLIARD'

Dive into the heart of tradition and discover the secrets of farming life in the past, as well as the famous Montbéliarde cow, the region's emblematic breed.

Morning:

Guided tour of the '**Musée de la paysannerie et des vieux métiers**' in Valentigney.

Built in 1766, the farmhouse that now houses the museum was enlarged in the 19th century. Through a wide range of objects, you can discover those emblematic of the Montbéliard region, such as the 'verquelure', the 'diari', furniture and, above all, a significant number of items about peasant workers' peculiar way of life. Several collections immerse visitors in forgotten occupations, such as sharpener or tanner, but also into the lives of great men such as Louis Vuillequez and Etienne Oehmichen.

Lunchtime:

Traditional lunch in a restaurant in the 'Pays de Montbéliard' to enjoy local specialties.

Afternoon:

Visit of the **Soleil Levant farm** in Ecurcey.

During the tour, you'll discover the farm and meet its herd of **Montbéliarde cows**.

€50 / PER PERSON*

FROM

BASED ON 20 PAYING GUESTS

*Price 2025

Price includes: both guided tours, admission to the 'Musée de la Paysannerie et des Vieux Métiers', cheese tasting and lunch (1/4 wine, water and coffee included).

Price does not include: booking fee (€15), supplement for visits on Sundays and public holidays, extras during meals, personal spendings, travel, parking and insurance



Nicolas, **an expert in the history of this rustic breed**, will tell you the story of his farm where animal welfare is at the heart of the agricultural approach. The aim is to produce the high-quality milk, essential to the production of **Morbier cheese**.

At the end of the tour, you'll be offered **a tasting of farm products**.



Book your experience:



+33 (0)3 81 94 14 64



reservations@paysdemontbeliard-tourisme.com

tradition and modernity

GROUP ONE- DAY PACKAGE CHRISTMAS ENCHANTMENT

This day takes you into the heart of an authentic Christmas Market, ranked as the 5th best and the most beautiful in 2023 in Europe.

Lunchtime:

Arrival for a **regional lunch** in one of the restaurants in the historical city center of Montbéliard, city of Princes.

Afternoon:

Meeting point at the Tourist Office for the start of the **'Christmas enchantment' guided tour** led by a tour guide.

At the end of the visit, enjoy a **glass of mulled wine*** or other hot beverage at the Christmas market and free time.

From 4:30 pm, you can admire **the illuminations**, which make the Montbéliard Christmas market so famous.

LES
**Lumières
de Noël**

*Alcohol abuse is bad for your health, please consume in moderation.

€45

FROM

/ PER PERSON*

BASED ON 20 PAYING GUESTS

*Price 2025

Price includes: lunch (1/4 wine, water and coffee included), guided tour and hot drink ticket.

Price does not include: booking fee (€15), supplement for visits on Sundays and public holidays, extras during meals, personal spendings, travel, parking and insurance.



Book your experience:



+33 (0)3 81 94 14 64



reservations@paysdemontbeliard-tourisme.com



tradition and modernity

GROUP TRIP PACKAGE CHRISTMAS ENCHANTMENT *2 days/1 night*

To experience the magic of Christmas, the 'Pays de Montbéliard' welcomes you for a stay, combining history and traditional legends of the region.

Day 1

Lunchtime: Arrival for a **traditional lunch** in one of the restaurants in the historic heart of Montbéliard, city of Princes.

Afternoon: Meeting point at the Tourist Office for the start of the '**Christmas enchantment**' guided tour led by a tour guide. At the end of the visit, enjoy a **glass of mulled wine*** or other hot beverage at the Christmas market and free time.

From 4:30 pm, you can admire **the illuminations**, which make the Montbéliard Christmas market so famous.

Evening: **Half-board overnight stay** in a 3-star hotel in the 'Pays de Montbéliard'.

Day 2

Morning: Breakfast at the hotel. Self-guided tour of the '**Musée de l'Aventure Peugeot**' in Sochaux, where you'll discover over 200 years of an extraordinary industrial success story. The museum presents a vast collection of Peugeot objects from the first saw blades to today's car models.

Lunchtime: **Regional lunch** in the heart of the museum, in one of the private lounges.

€ 169

FROM / PER PERSON*

BASED ON 20 PAYING GUESTS

Optional: guided tour of the Peugeot Adventure Museum (extra charge, please contact us)

*Price 2025

Price includes: lunch on day 1 (1/4 wine, water and coffee included), guided tour, hot drink ticket, half-board accommodation in a hotel, tourist tax, admission to the Peugeot Museum and lunch on day 2 (1 bottle of wine for 5, water and coffee included).

Price does not include: booking fee (€15), supplement for visits on Sundays and public holidays, extras during meals, single room extra, personal spendings, travel, parking and insurance.



LES
**Lumières
DE Noël**

Authentic Christmas market ranked
**the 5th best and the most
beautiful in 2023 in Europe**

*Alcohol abuse is bad for your health, please consume in moderation.



Book your experience:



+33 (0)3 81 94 14 64



reservations@paysdemontbeliard-tourisme.com



PAYS DE
MONTBÉLIARD
TOURISME

mvisite.fr

yesterday and tomorrow

GROUP TRIP PACKAGE FOR VINTAGE CARS CLUBS *2 days/1 night*

Discover the singular identity of the 'Pays de Montbéliard' aboard your classic car!

Day 1

Morning:

Welcome at the Tourist Office by the team and members of the '**Club des Vieux Volants Franc-Comtois**'. Road-books will be handed to the teams and departure for Blamont.

Lunchtime:

Arrival in Blamont and **traditional lunch** at the restaurant 'l'Orée du Bois'.

Afternoon:

Departure for Mandeure along the road through Ecurcey: perhaps you'll be lucky enough to see a herd of our famous **Montbéliarde cows!** Stop on the way to discover the view from the Mandeure belvedere. Your tour guide will then be waiting for you at the ancient theater for a guided tour of the last vestige of the **Epomanduodurum** agglomeration.

Evening:

Check-in at your 3-star hotel in Sochaux. Your car will be parked in the secure parking lot of the 'Musée de l'Aventure Peugeot' during the night. **A tasting of local cheeses** will be served at your hotel before dinner and the overnight stay.

€ 203

FROM / PER PERSON*

BASED ON 20 PAYING GUESTS

Possibility to extend your stay (please contact us)

*Price 2025

Price includes: overnight stay in a 3* hotel (based on double room), tourist tax, parking, meals (1/4 wine, water and coffee included), entrance fees to sites and visits mentioned in the program, one roadbook per team and administration fees.

Price does not include: supplement for visits on Sundays and public holidays, extras during meals, single room extra, personal spendings, travel and insurance.

Day 2

Morning:

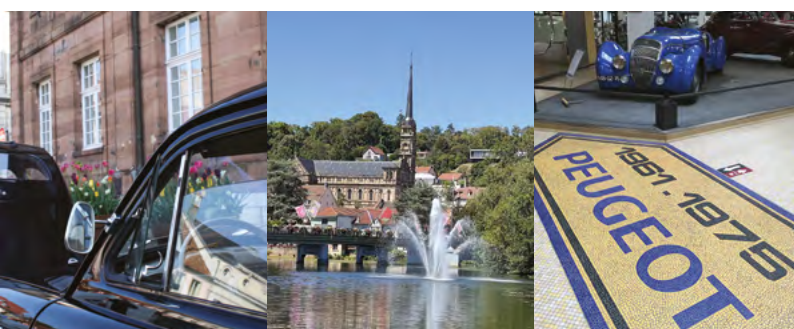
Breakfast at the hotel followed by a **self-guided tour of the 'Musée de l'Aventure Peugeot'** in Sochaux, where you'll discover over 200 years of an extraordinary industrial success story.

Lunchtime:

Regional lunch in the heart of the museum, in one of the private lounges.

Afternoon:

Meeting point at the Tourist Office for a **guided tour of the historical heart of Montbéliard to discover the city of princes**. Nestled at the foot of its castle, travel through four centuries of a unique destiny under the reign of the Wurtemberg family.



Book your experience:



+33 (0)3 81 94 14 64



reservations@paysdemontbeliard-tourisme.com

STANDARD INFORMATION FORM FOR TRAVEL SERVICE CONTRACTS

Travellers will be provided with all essential information about the travel service before concluding the travel contract.

Both the service provider(s) and the Tourist Office are responsible for the proper execution of the travel service.

Travellers will be provided with an emergency telephone number or contact details for reaching the service provider(s) or the Tourist Office.

Travellers may transfer their travel service to another person, subject to a reasonable period of notice and possibly subject to the payment of additional fees.

The price of the travel service may only be increased if specific costs increase and if this possibility is explicitly provided for in the contract. In any case, it may not be changed less than twenty days before the start of the journey. If the increment exceeds 8% of the price of the travel service, the traveller may withdraw from the contract. If the service provider reserves the right to increase the price, the traveller is eligible for a price reduction in case of a reduction of the associated costs.

Travellers may cancel the contract without paying any cancellation fee and receive a full refund of payments made if any of the essential elements of the contract, other than the price, are substantially changed. If, before the start of the service, the professional in charge cancels the service, travellers may obtain a refund and compensation, if applicable.

Travellers may cancel the contract without paying any cancellation fee before the start of the service in the event of exceptional circumstances, e.g. if there are serious safety problems at the destination that are likely to affect the trip.

In addition, travellers may cancel the contract at any time before the start of the journey, subject to payment of an appropriate and justifiable cancellation fee.

If, after the start of the journey, important elements of the journey cannot be provided as planned, appropriate alternative services must be offered to the travellers at no extra cost. Travellers may withdraw from the contract without paying a withdrawal fee if the services are not provided in accordance with the contract, if this significantly disturbs the performance of the journey and if the service provider does not resolve the problem.

Travellers are also eligible for a price reduction and/or compensation in the event of non-performance or poor performance of the travel service.

The service provider(s) or tourist office should help if the traveller is in difficulty.

If the service provider(s) or tourist office becomes insolvent, the payments made will be refunded. The Tourist Office has taken out an insolvency protection policy with APST located at 15 avenue Carnot 75017 PARIS - telephone number: +33 1 42 96 75 15. Travellers may contact this organisation if services are not provided due to the insolvency of the Tourist Office.

STANDARD INFORMATION FORM FOR PACKAGE TRIP CONTRACTS

Essential rights provided by Directive (EU) 2015/2302 transposed into the Tourism Code:

Travelers will receive all essential information about the travel service before concluding the travel contract.

The service provider(s) and the Tourist Office are responsible for the proper execution of all travel services included in the contract.

Travelers are provided with an emergency telephone number or contact information enabling them to reach the service provider(s) or the Tourist Office.

Travelers may transfer their package to another person, subject to reasonable notice and, if applicable, the payment of additional fees.

The package price may only be increased if specific costs increase (e.g. fuel prices) and if this possibility is explicitly stipulated in the contract, and in any case may not be changed less than twenty days before the start of the package. If the price increase exceeds 8% of the package price, the traveller may withdraw from the contract. If the organizer reserves the right to increase the price, the traveller is entitled to a price reduction in the case of a reduction in the corresponding costs.

Travelers may cancel the contract without paying a cancellation fee and receive a full refund of payments made if any of the essential elements of the package, other than the price, are substantially modified. If, prior to the start of the package, the professional responsible for the package cancels it, travellers may obtain a refund and compensation if applicable.

Travelers may cancel the contract without paying a cancellation fee before the start of the package in the event of exceptional circumstances, for example if there are serious safety problems at the destination that are likely to affect the package.

In addition, travellers may cancel the contract at any time prior to the start of the package, subject to payment of an appropriate and justifiable cancellation fee.

If, after the start of the package, important elements of the package cannot be provided as planned, appropriate alternative services must be offered to travellers at no extra charge. Travelers may cancel the contract without paying cancellation fees if the services are not performed in accordance with the contract, if this significantly disrupts the execution of the package and if the organizer fails to remedy the problem.

Travelers are also entitled to a price reduction and/or compensation in the event of non-performance or poor performance of travel services.

The service provider(s) or Tourist Office must provide assistance if the traveller is in difficulty.

If the service provider(s) or Tourist Office becomes insolvent, the amounts paid will be refunded. If the service provider(s) or the Tourist Office becomes insolvent after the start of the package, and if transport is included in the package, repatriation of travellers is guaranteed. The Tourist Office has taken out insolvency protection with l'APST located at 15 avenue Carnot 75017 PARIS - telephone number: 01 42 96 75 15. Travelers may contact this organization if they are refused services due to the insolvency of the Tourist Office.

You can consult Directive (EU) 2015/2302 transposed into national law: <https://www.legifrance.gouv.fr/eli/ordonnance/2017/12/20/ECOI1727619R/jo/text>

PAYS DE MONTBELIARD TOURISME PARTICULAR TERMS AND CONDITIONS OF SALE

Registered with the Registre des Opérateurs de Voyages et de Séjours under n°IM025120010

Participation in one of the options proposed in this document or any other customised option implies acceptance of the special booking conditions set out below:

Art 1 Definition: The Pays de Montbéliard Tourist Office, authorised under Articles R211-3 to R211-11 of Decree No. 2017-1871 of 29 December 2017 for the application of Ordinance No. 2017-1717 of 20 December 2017 transposing Directive (EU) 2015/2302 of the European Parliament and of the Council of 25 November 2015 on package travel and related travel services, ensures the booking and sale of all types of leisure and hospitality services of general interest in areas of influence. It facilitates the tourist's experience by offering a choice of numerous services and by ensuring a quick and secure booking.
Pays de Montbéliard Tourist Office; legal form: association; SIRET: 30537827500021 - APE: 7990Z; Registration Certificate IM025120010; Financial Guarantee: with l'APST whose head office is in Paris.

Art 2 Information: the services proposed correspond to the offer mentioned in the above information form and are binding on the Tourist Office of the Pays de Montbéliard. However, changes may naturally occur in the number, nature and prices of the services offered. In accordance with the above form, if any modifications are made, they will be notified to the traveller in writing by the Tourist Office of the Pays de Montbéliard before the agreement is concluded.

Art 3 Duration of the stay: the traveller who signs the contract for a fixed period may not under any circumstances claim any right to stay in the premises at the end of the journey.

Art 4 Prices: prices are published in EURO per person including VAT or as a package and are calculated according to the number of participants. These prices do not include: travel, local transport unless otherwise stated, parking, insurance, meal extras, single room surcharge, booking fees, personal spending. They may be revised in the event of economic fluctuations.

Art 5 Booking: the booking becomes firm when a dated and signed booking contract is sent, together with a deposit of 30% of the total cost of the service. This should be sent to the Office de Tourisme du Pays de Montbéliard - 1, rue Henri Mouhot - 25200 MONTBÉLIARD. Bookings are subject to the availability of service providers and to weather conditions for outdoor activities. For guided tours, there will be one guide for a maximum of 30 people (except for the historic tour of Castle Montbéliard Wurtemberg and the Patt Donation).

Art 6 Payment of the balance: it must be paid 30 days before the start of the stay. Any additional services not included in the package will be paid for directly on site by the traveler.

Art 7 Vouchers: On receipt of the balance and within 7 days prior to the service, the Pays de Montbéliard Tourist Office will send vouchers to be presented to each service provider. These vouchers will mention the date, time, nature of the service, the number of people for whom it is valid and the contact details of each service provider.

Art 8 Late bookings: in the event of booking less than 30 days before the event, full payment is required at the time of booking.

Art 9 Arrival: the traveller must arrive on the day and at the time specified on the contract or voucher. In case of delay, the traveller must inform the service provider(s) whose address and telephone number appear on the voucher. Any service not consumed due to a delay or interruption of the trip will remain due and will not be refunded.
For guided tours, any delay in the start time will be deducted from the duration of the tour.

Art 10 Accommodation: prices are based on a double room with bath or shower and breakfast. The accommodation offered is 3*** category unless otherwise specified in the presentation text. The contract is established for a maximum accommodation capacity. If the number of participants exceeds the accommodation capacity, the Pays de Montbéliard Tourist Office may refuse to accept additional travellers. In this case, the contract is considered to have been broken by the traveller.

Art 11 Cancellation by the traveller: any cancellation must be notified to the Pays de Montbéliard Tourist Office. The reimbursement of the sums paid will be made after deduction of the amounts (cancellation fees) specified below according to the date of cancellation in relation to the date of the service.
From booking to 30 days before start of services: 30%.
29 to 7 days before start of services: 60%.
6 to 0 days before start of services: 100%.
In case of no-show, no refund will be made.

Art 12 Cancellation by the Tourist Office or its partners: please refer to the form on the previous page.

Art 13 Change in the number of guests: in the event that the number of participants present on the day of the service is less than the number reserved, no refund will be granted if the Tourist Office of the Pays de Montbéliard has not been informed in writing (fax, e-mail, letter) at least 7 clear days before the date of the service reserved. Otherwise, the number of people specified on the contract will be invoiced.

Art 14 Interruption of the stay: in the event of interruption of the stay by the traveller, no refund will be made for services not consumed, unless the reason is covered by the traveller's cancellation insurance.

Art 15 Modification by the Tourist Office of the Pays de Montbéliard of a substantial element of the contract: please refer to the form on the previous page.

Art 16 Inability of the Tourist Office or its partners to provide the services provided for in the contract during the stay: please refer to the form on the previous page.

Art 17 Damages: the traveller is responsible for all damages caused by him/her. The traveller is requested to check that he/she has all the necessary insurance covering him/her during the trip or stay.

Art 18 Insurance: the Pays de Montbéliard Tourist Office has taken out insurance to cover the consequences of Professional Civil Liability with Aviva Assurance, whose head office is located at 13 rue du Moulin Bailly in Bois-Colombes (92270).

Art 19 Liability: the Pays de Montbéliard Tourist Office under the terms of article L 211-16 of the Tourism Code which stipulates: the professional who sells a tourist package mentioned in 1° of article L. 211-1 is automatically liable for the execution of the services provided for in this contract, whether these services are executed by himself or by other travel service providers, without prejudice to his right of recourse against them. However, the Tourist Office may be exempted from all or part of its liability by proving that the damage is attributable either to the traveller or to a third party not involved in the provision of the travel services included in the contract (and that it is unforeseeable or unavoidable) or to exceptional and unavoidable circumstances.

Art 20 Complaints: any complaint relating to the non-performance or poor performance of the contract must be sent to the Pays de Montbéliard Tourist Office at the latest within 3 working days following the end of the service, by registered letter with acknowledgement of receipt (or equivalent).